



GRIN-Global – Administrator Webinar

Session 3: Dataview Editing – Basics (continued)
 & Advanced Editing Topics;
 other GG Administrator Topics

martin reisinger,
instructor

Dataview Editing - Continuation

- Quiz
- Review / Explain editor interface
 - Fields ... Parameters... Preview
 - Auto Synchronize
 - Rearrange the column order
 - Delete?
- Adding new fields & tables to the schema – use Table Mappings
- Dataview Editor Tips
- Languages

Quiz!

Column heading names in the Curator Tool

- are they known as “friendly names,” “alternate names,” or “database table names” ?
- – are they defined in SSMS?

Quiz!

Column heading names in the Curator Tool

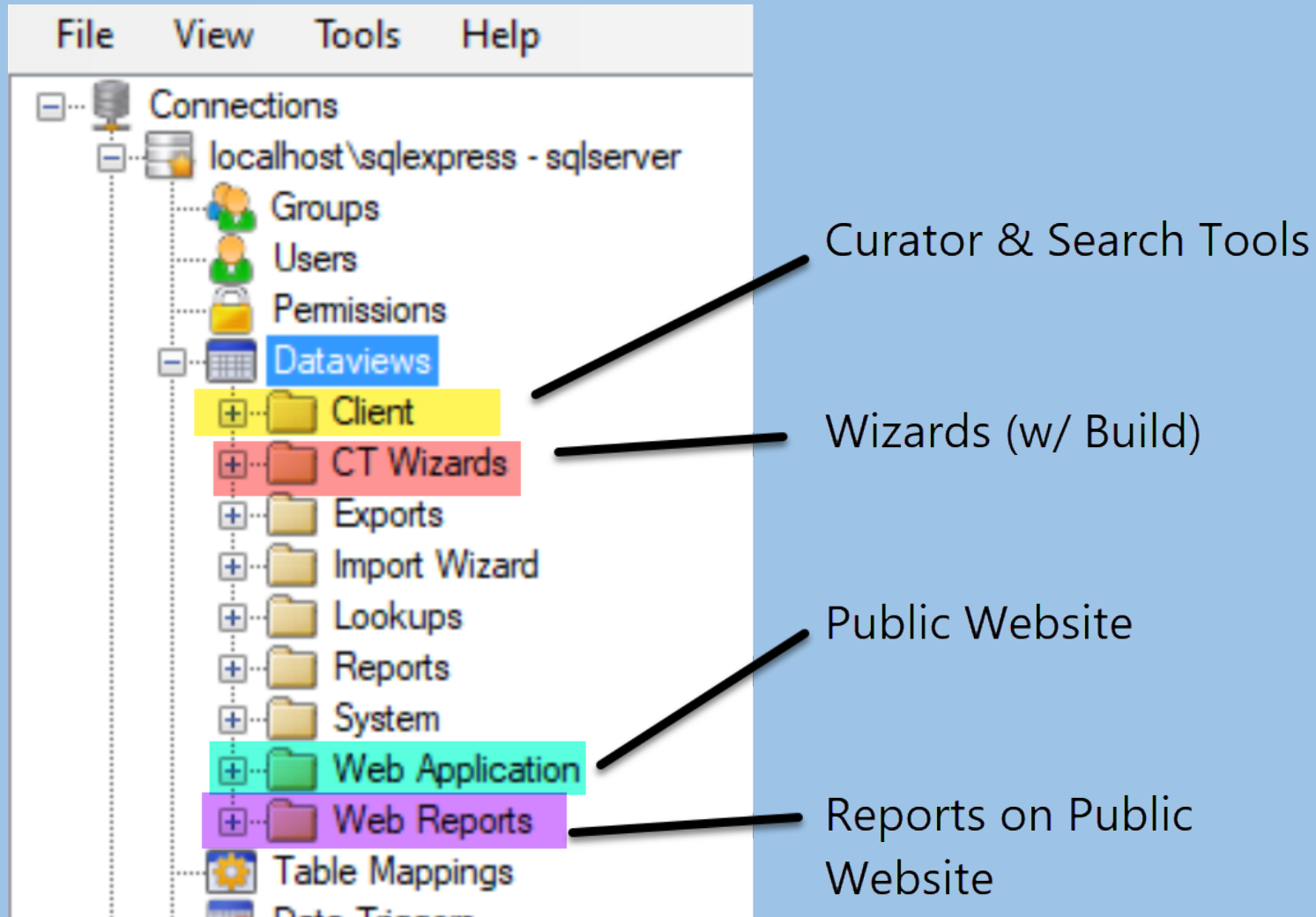
- are they known as “friendly names,” “alternate names,” or “database table names” ?
- – are they defined in SSMS? NO

Review

- Questions regarding any topics covered in the Previous Sessions

Dataviews: Categories

- Leave others alone!



Fields...

Auto Synchronize

Source Tables and Fields

NameHierarchy

+

accession

+

accession_action

+

accession_inv_ann

+

accession_inv_atta

+

accession_inv_grou

+

accession_inv_grou

+

accession_inv_grou

+

accession_inv_nam

+

accession_inv_vou

+

accession_jpr

+

accession_pedigree

SQL Server

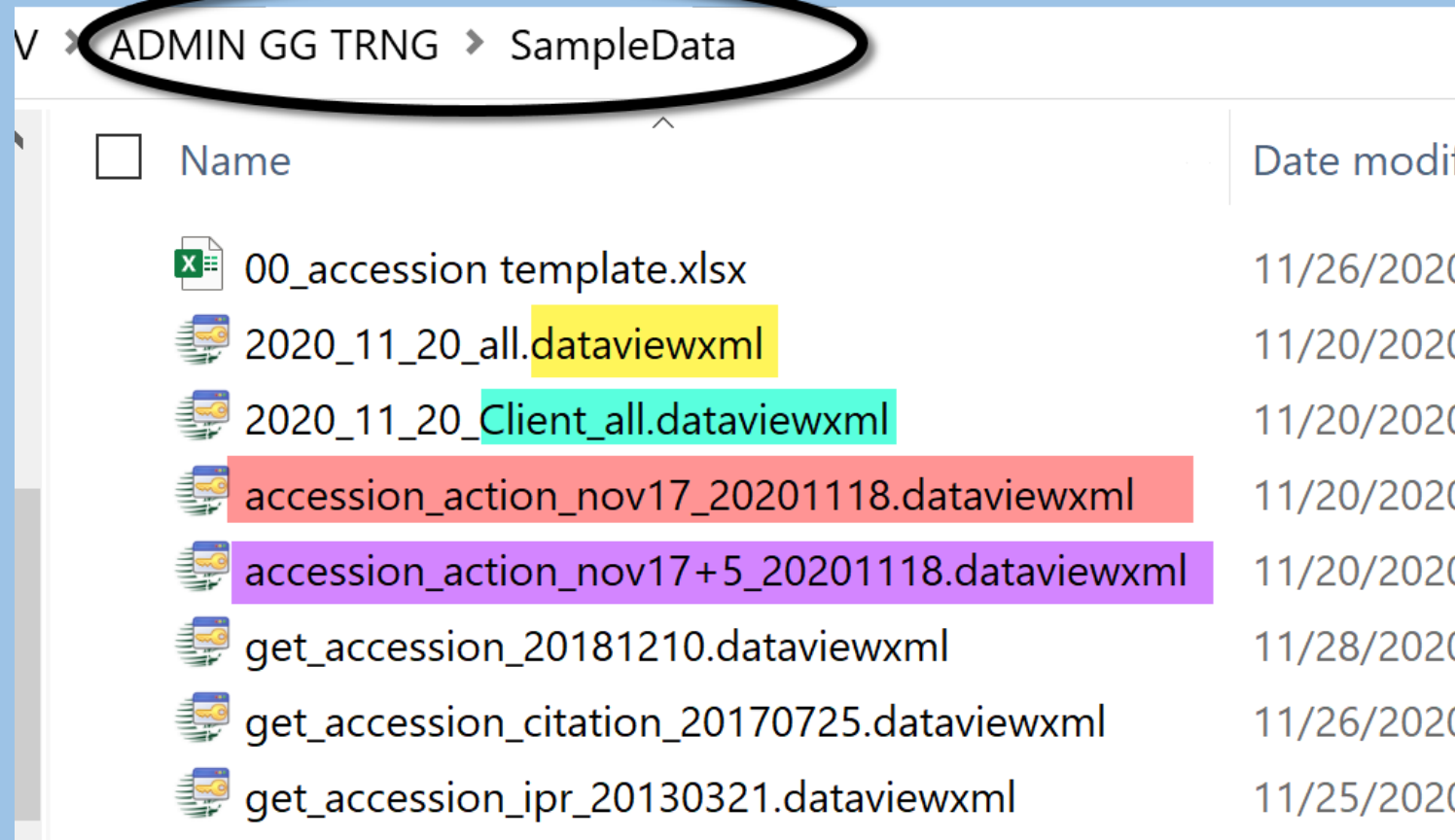
```
SELECT
  distinct a.accession_id,
  a.doi,
  a.accession_number_part1,
  a.accession_number_part2,
  a.accession_number_part3,
  a.taxonomy_species_id,
  (select min(plant_name) from accession_inv_name an, inventory i whe
    i.inventory_id = an.inventory_id and i.accession_id = a.accession
    plant_name_rank = (select MIN(plant_name_rank) from accession_inv
  (select s.geography_id from accession_source s where a.accession_id
```









Auto Synchronize

FieldsParametersPropertiesTitlesPreview

	Name	Table	Field	Required?	Visible In CT?	Read Only?	Primary Key?	Tran
▶	accession_id	accession (a)	accession_id	<input checked="" type="checkbox"/>	<input checked="" type="checkbox"/>	<input checked="" type="checkbox"/>	<input checked="" type="checkbox"/>	
	doi	accession (a)	doi	<input type="checkbox"/>	<input checked="" type="checkbox"/>	<input type="checkbox"/>	<input type="checkbox"/>	
	accession_number_p...	accession (a)	accession_number_part1	<input checked="" type="checkbox"/>	<input checked="" type="checkbox"/>	<input type="checkbox"/>	<input type="checkbox"/>	
	accession_number_p...	accession (a)	accession_number_part2	<input type="checkbox"/>	<input checked="" type="checkbox"/>	<input type="checkbox"/>	<input type="checkbox"/>	
	accession_number_p...	accession (a)	accession_number_part3	<input type="checkbox"/>	<input checked="" type="checkbox"/>	<input type="checkbox"/>	<input type="checkbox"/>	

Copy / Export & Import / Rename



<input type="checkbox"/>	Name	Date modified
	00_accession template.xlsx	11/26/2020
	2020_11_20_all.dataviewxml	11/20/2020
	2020_11_20_Client_all.dataviewxml	11/20/2020
	accession_action_nov17_20201118.dataviewxml	11/20/2020
	accession_action_nov17+5_20201118.dataviewxml	11/20/2020
	get_accession_20181210.dataviewxml	11/28/2020
	get_accession_citation_20170725.dataviewxml	11/26/2020
	get_accession_ipr_20130321.dataviewxml	11/25/2020

Your first time
using Export:



select a preferred
folder which you
intend to use
again storing the
dataview files

Troubleshooting & Tips w New DVs

- Copy to a text processor
- Don't move all the SQL at one time
- Embed Comments `--` and/or `/* comment */`

Columns

- Reorder
 - ...with the SQL

Columns

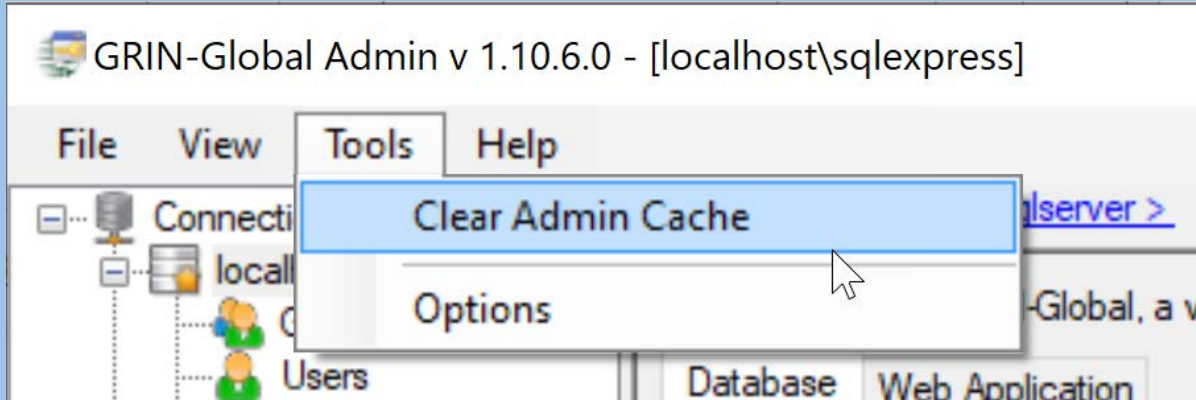
- Reorder
 - ...with the SQL
- Before deleting a column...
 - check if required
 - comment out first

For a Dataview to be visible & usable in the CT,
what must be true?

... in order to use the dataview to edit data in the CT...

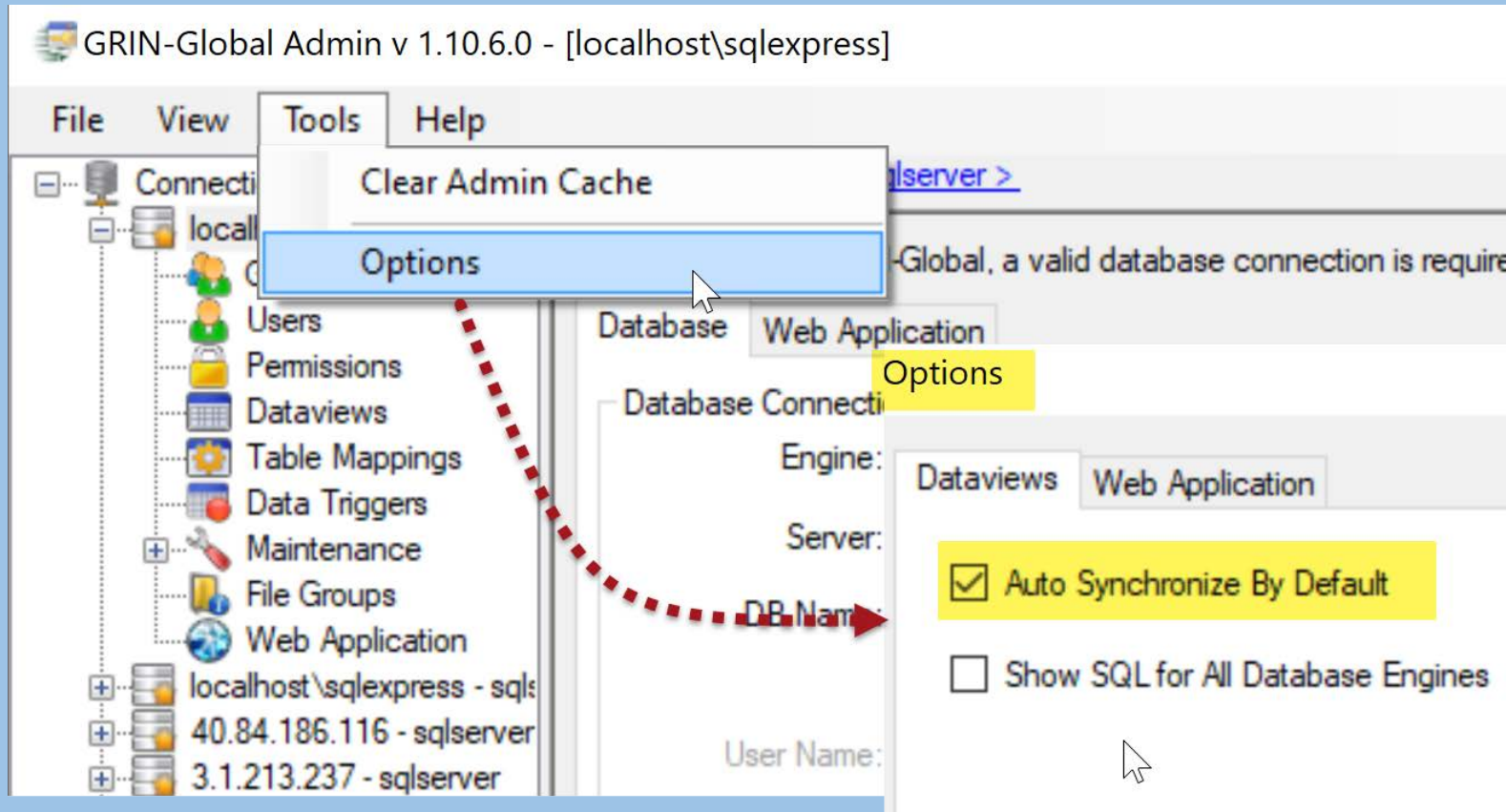
Change the dataview's Category to **Client** (in **Properties**)

Admin Cache



- Use the **Clear Admin Cache** option to free up hard drive space

Tools | Options



- (Generally,) keep the Options set **Auto Synchronize By Default**

How does GG Do it?

Relate database *table* names to
dataview *friendly* names?

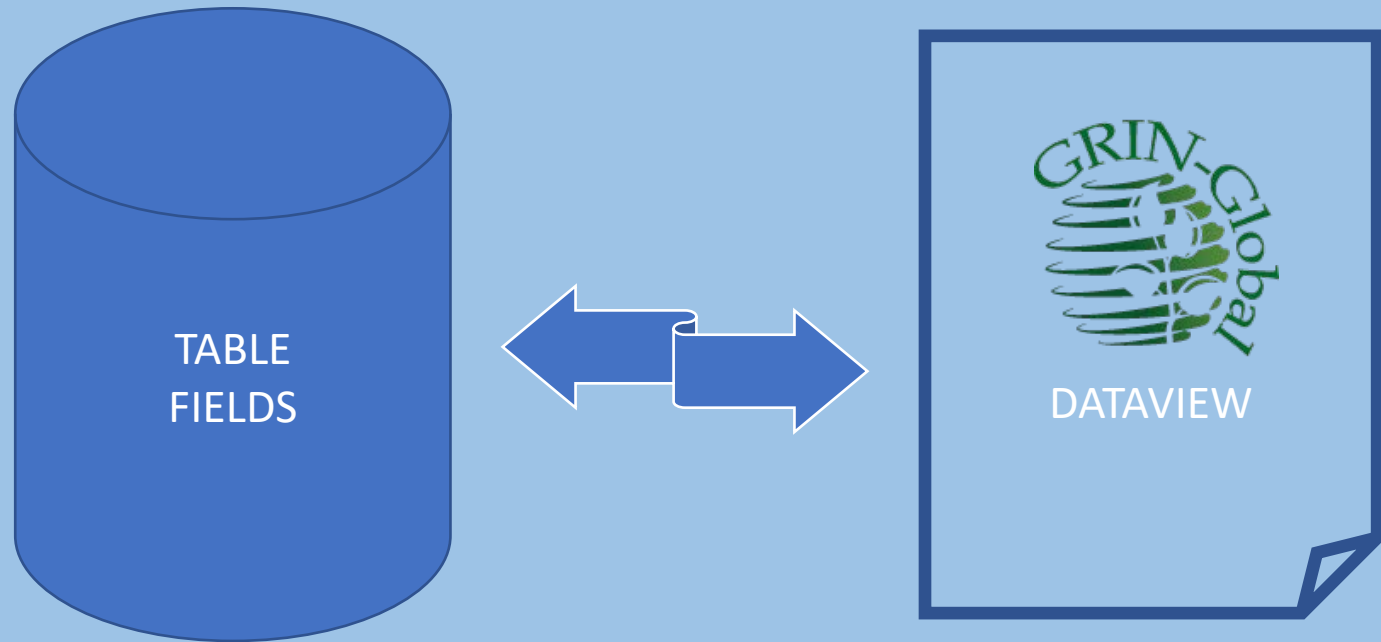



Table Field Names

DESKTOP-35RLT23\S...al - dbo.accession* X		
	Column Name	Data Type
🔑	accession_id	int
	doi	nvarchar(20)
	accession_number_part1	nvarchar(50)
	accession_number_part2	int
	accession_number_part3	nvarchar(50)
	is_core	nvarchar(1)
	is_backed_up	nvarchar(1)
	backup_location1_site_id	int
	backup_location2_site_id	int
▶	status_code	nvarchar(20)
	life_form_code	nvarchar(20)



screen from SSMS

How does GG Do it? Relate table names to dataview friendly names?

Table Mappings

- associate *dataview* fields to specific table fields in the database

... for showing friendly column names, allowing updates, etc.

- enables the dataview editor, as well as the middle tier – enables the updating via the dataview

Mapped vs. Unmapped

When fields are added to the table using SSMS, they need to be mapped

...map with the Admin Tool

Database fields *must be mapped* if they are to be available to GG



Table Mappings

N-Global Admin v 1.10.6.0 - [Table Mapping - accession - localhost\sqlexpress]

View Tools Help

localhost\sqlexpress - sqlserver > Table Mappings > accession

Database Area: ☒ Enabled

Fields Relationships Indexes

Name	Purpose	Type	User Interface	Default	Required?	Read On...	Foreign...	Foreign Key Field	Lookup Picker Sou...	Drop Down Source
accession_id	Primary Key	Integer	Textbox (integer...		Y	Y	N			
accession_nu...	Editable D...	Text	Textbox (free-fom)		Y	N	N			
doi	Editable D...	Text	Textbox (free-fom)		N	N	N			
accession_nu...	Editable D...	Integer	Textbox (integer...		N	N	N			
accession_nu...	Editable D...	Text	Textbox (free-fom)		N	N	N			
is_core	Editable D...	Text	Checkbox	N	Y	N	N			
is_backed_up	Editable D...	Text	Checkbox	N	Y	N	N			
backup_locati...	Editable D...	Integer	Lookup Picker	{DBNull.Value}	N	N	Y	site.site_id	site_lookup	
backup_locati...	Editable D...	Integer	Lookup Picker	{DBNull.Value}	N	N	Y	site.site_id	site_lookup	
status_code	Editable D...	Text	Drop Down	ACTIVE	Y	N	N			ACCESSION_STA...
life_form_code	Editable D...	Text	Drop Down	{DBNull.Value}	N	N	N			ACCESSION_LIFE...
improvement_...	Editable D...	Text	Drop Down	{DBNull.Value}	N	N	N			IMPROVEMENT_...
reproductive_...	Editable D...	Text	Drop Down	{DBNull.Value}	N	N	N			REPRODUCTIVE_...
initial_receive...	Editable D...	Text	Drop Down	{DBNull.Value}	N	N	N			GERMPLASM_FO...

AT provides more info than SSMS !

Use Case

- A field was requested for the accession table to store a URL but not in the Note field because...

[

see NPGS TRAINING accession MAR 1 RRG

<https://training.ars-grin.gov/gringlobal/accessiondetail?id=2108129>

]

Narrative on the PW is the Note field

Reisinger Resource Group

Search Accessions GRIN-Global

MAR 1 RRG GRIN-Global

GG AT Webinar Series - 2020

gg_AT_exer02.p

https://training.ars-grin.gov/gringlobal/accessiondetail?id=2108129

visited Beyond Building PLACES GarrettCo. COVID-19 GG B350Talk Plants Food Gov SITES REFS Files Chil

Summary

Passport

Taxonomy

Other

Pedigree

IPR

Observation

Core Passport Data

Taxonomy:

Humulus lupulus L.

Top Name:

MAR 1 RRG

Origin:

–

Maintained:

North Central Regional PI Station

Received by NPGS:

29 Nov 2020

Source History

Accession Names and Identifiers

MAR 1 RRG

Type: Site identifier

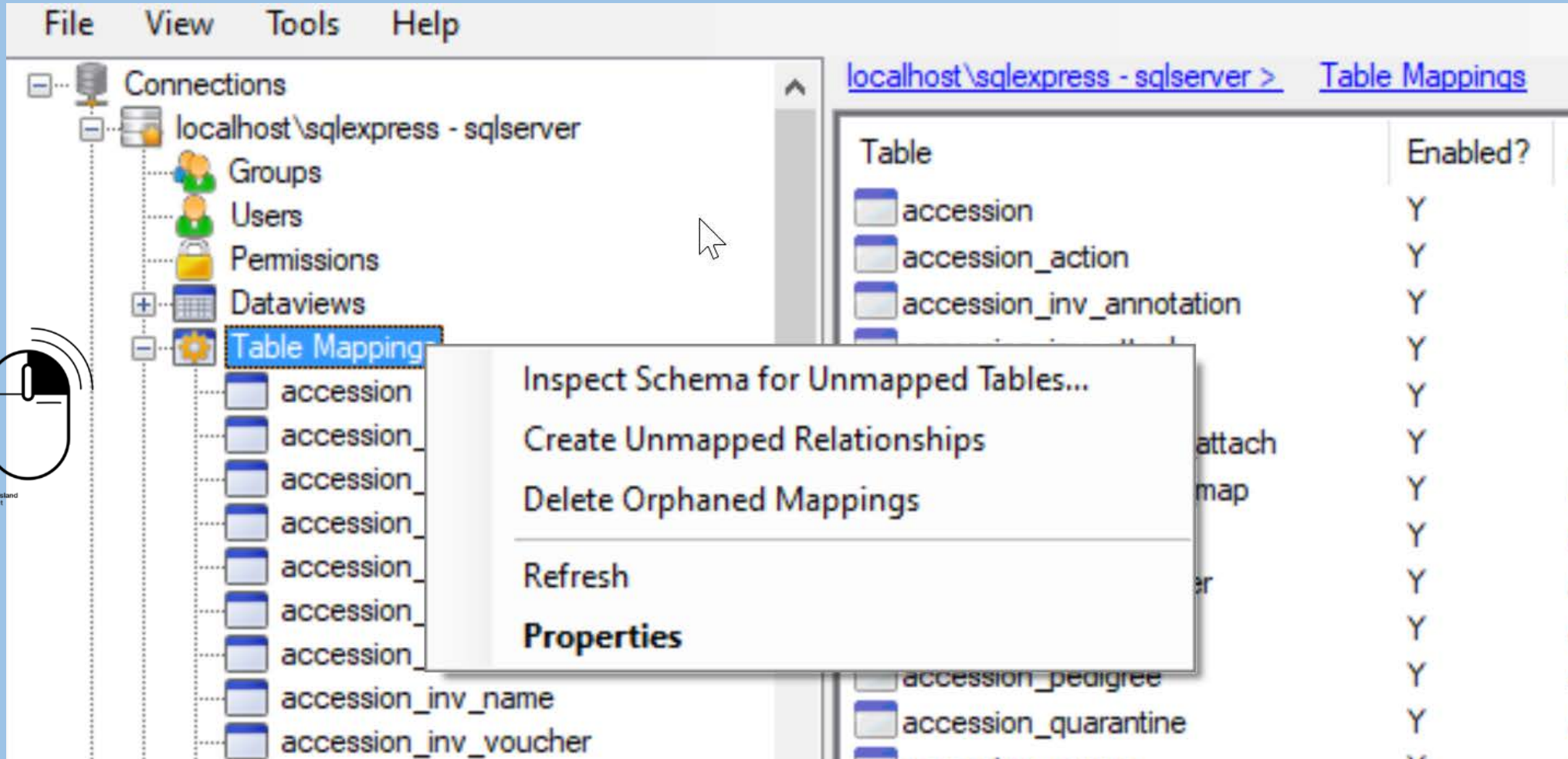
Narrative

Defender; for more info see... [PI 284730](#)

As an aside, in this Note field, how was the link created?

Accessions	Inventory	Orders	Cooperators	Get Crop Trait Observation	Get Crop	Get Crop Trait	Crop Tr
	Received Date	Is Web Visible?	Note				
	11/29/2020	Y	Defender; for more info see... PI 284730				

Table Mappings



The screenshot displays the SQL Server Enterprise Manager interface. The left pane shows the 'Table Mapping' folder expanded under 'localhost\sqlexpress - sqlserver'. The right pane shows a list of tables with checkboxes and an 'Enabled?' column. A context menu is open over the 'Table Mapping' folder, showing options like 'Inspect Schema for Unmapped Tables...', 'Create Unmapped Relationships', 'Delete Orphaned Mappings', 'Refresh', and 'Properties'.

Table	Enabled?
<input type="checkbox"/> accession	Y
<input type="checkbox"/> accession_action	Y
<input type="checkbox"/> accession_inv_annotation	Y
<input type="checkbox"/> accession_inv_name	Y
<input type="checkbox"/> accession_inv_voucher	Y
<input type="checkbox"/> accession_pedigree	Y
<input type="checkbox"/> accession_quarantine	Y
<input type="checkbox"/> accession_source	Y



Created by Icon Island
from Noun Project

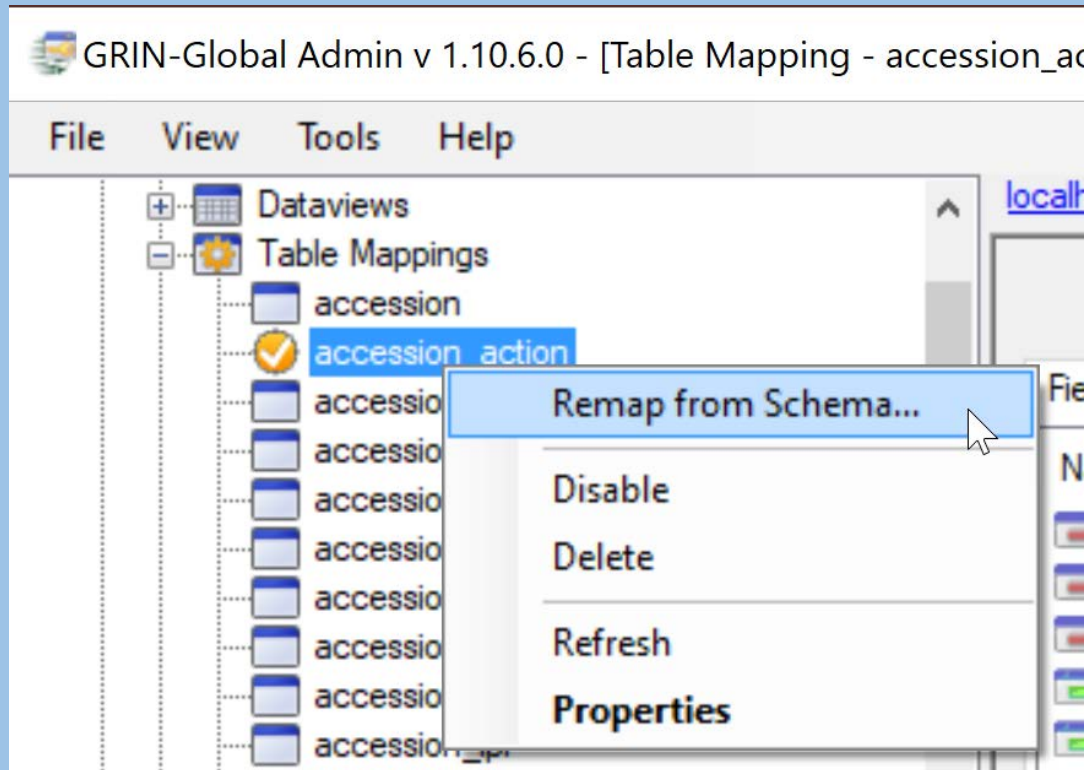
Table Mappings: Table Level

Menu Item	Description
Inspect Schema for Unmapped Tables	List all tables in the schema which are not currently mapped
Create Unmapped Relationships	Use when a table has been modified in the database schema and has one or more relationships that have been modified, added, or removed, but which were not yet mapped in Table Mappings.
Delete Orphaned Mappings	Delete “Orphaned Mappings” – when tables have been dropped from the schema, but are still mapped in Table Mappings
Refresh	Refreshes the view in the Admin Tool with the latest data from the database.
Properties	See Refresh.

Table Mappings: Field Context Menu

Menu Item	Description
New Field...	Map a new field to GRIN-Global
Show Dependencies...	Displays a list of all instances where the field is referenced in dataviews
Delete	Deletes the field's table mapping information
Export List	Generates a .csv file of the table mappings
Refresh	Ensures the display is current
Properties	Displays Table Mappings: Field Detail Window

New Field Added?



the following steps
show how to map...

Steps in Mapping a DB *Field* to a Dataview

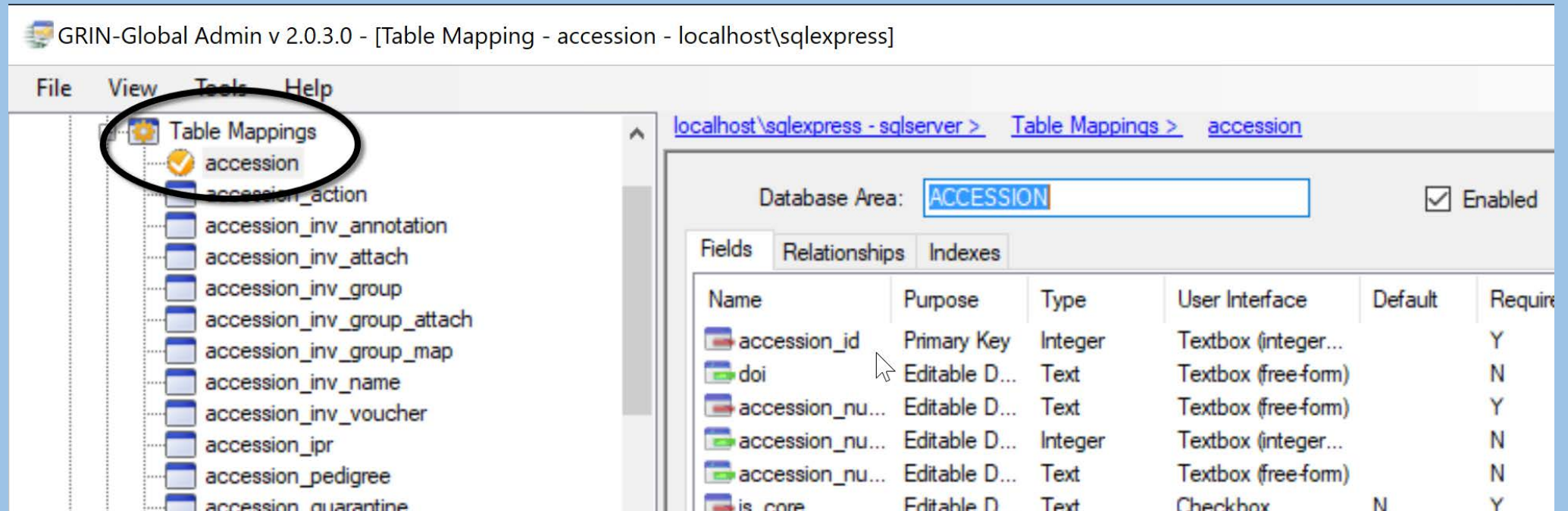
1. Create the field in the database (use SSMS)

Example:

```
USE gringlobal
ALTER TABLE dbo.accession
ADD noteURL nVARCHAR(max) NULL
;
```

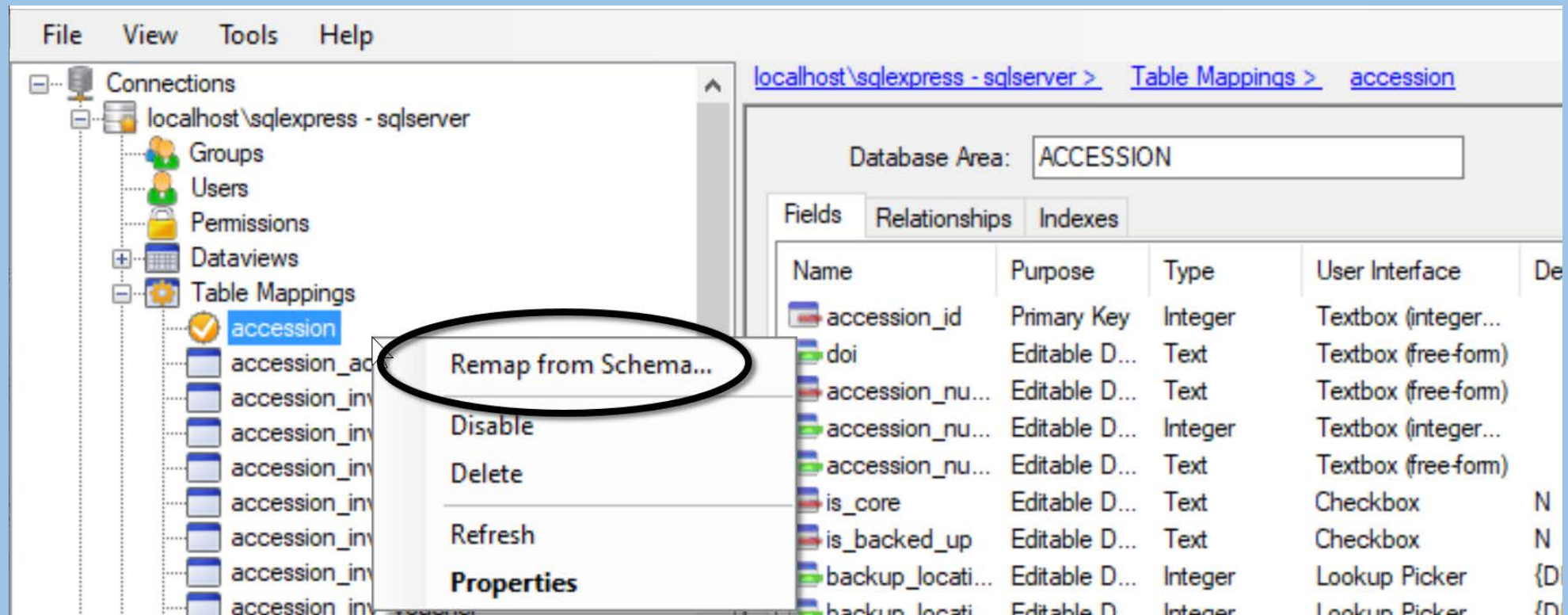
Steps in Mapping a DB *Field* to a Dataview

2. In the AT, select the table in Table Mappings



Steps in Mapping a DB *Field* to a Dataview

3. Right-click on the table name; select **Remap from Schema**



Steps in Mapping a DB *Field* to a Dataview

4. Select **Generate Default Mappings**

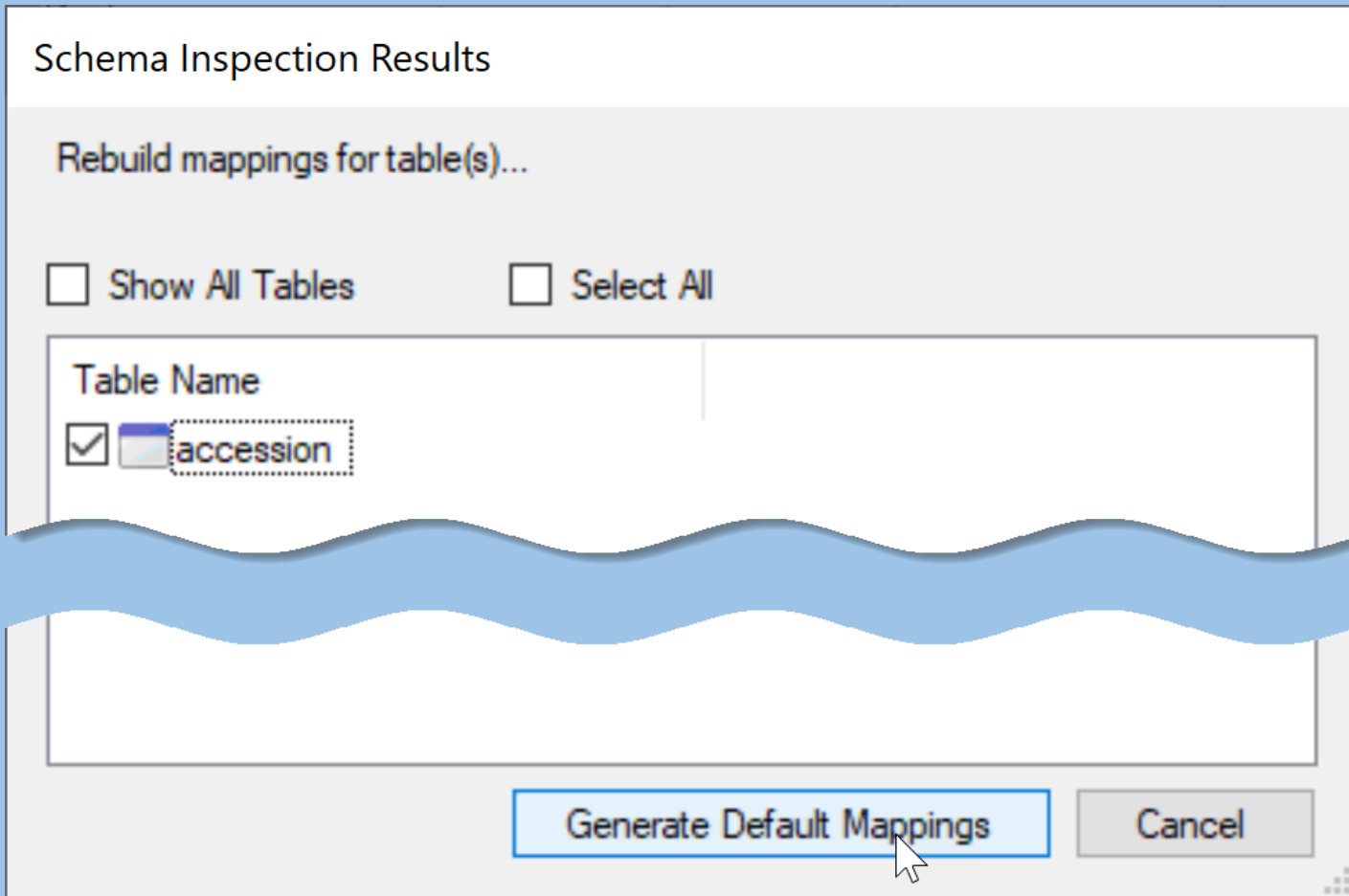


Table Mappings: Field Detail (Properties)

Table Mapping Field Detail

Name: < >

☐ Is Primary Key ☐ Is Auto Incremented ☐ Auto-save on move

☐ Is Foreign Key

Foreign Key Detail

Field: ...

☒ Is Required ☐ Is Read Only

Purpose: Min Length: Max Length:

Type: 0 50 ☐ Unlimited

Default Value: ☐ Empty (prevent saving unspecified value)

User Interface:

Display Text:

	Language	Title	Description
►	Český		
	ENG	Accession Prefix	accession_number_part1 -- Each acce...
	English	Accession Prefix	accession_number_part1 -- Each acce...
	Español	Prefijo de la accesión	
	Français	Préfixe de l'accession	
	Português	Prefixo do acesso	

Save Cancel

complete the Titles and Descriptions in the desired languages

5. Edit Titles & Descriptions; ...other options as needed

Table Mapping Field Detail [X]

Name:

☐ Is Primary Key ☐ Is Auto Incremented ☐ Auto-save on move

☐ Is Foreign Key

Foreign Key Detail

Field:

☐ Is Required ☐ Is Read Only

Purpose: Min Length: Max Length: ☐ Unlimited

Type: ☐ Unlimited

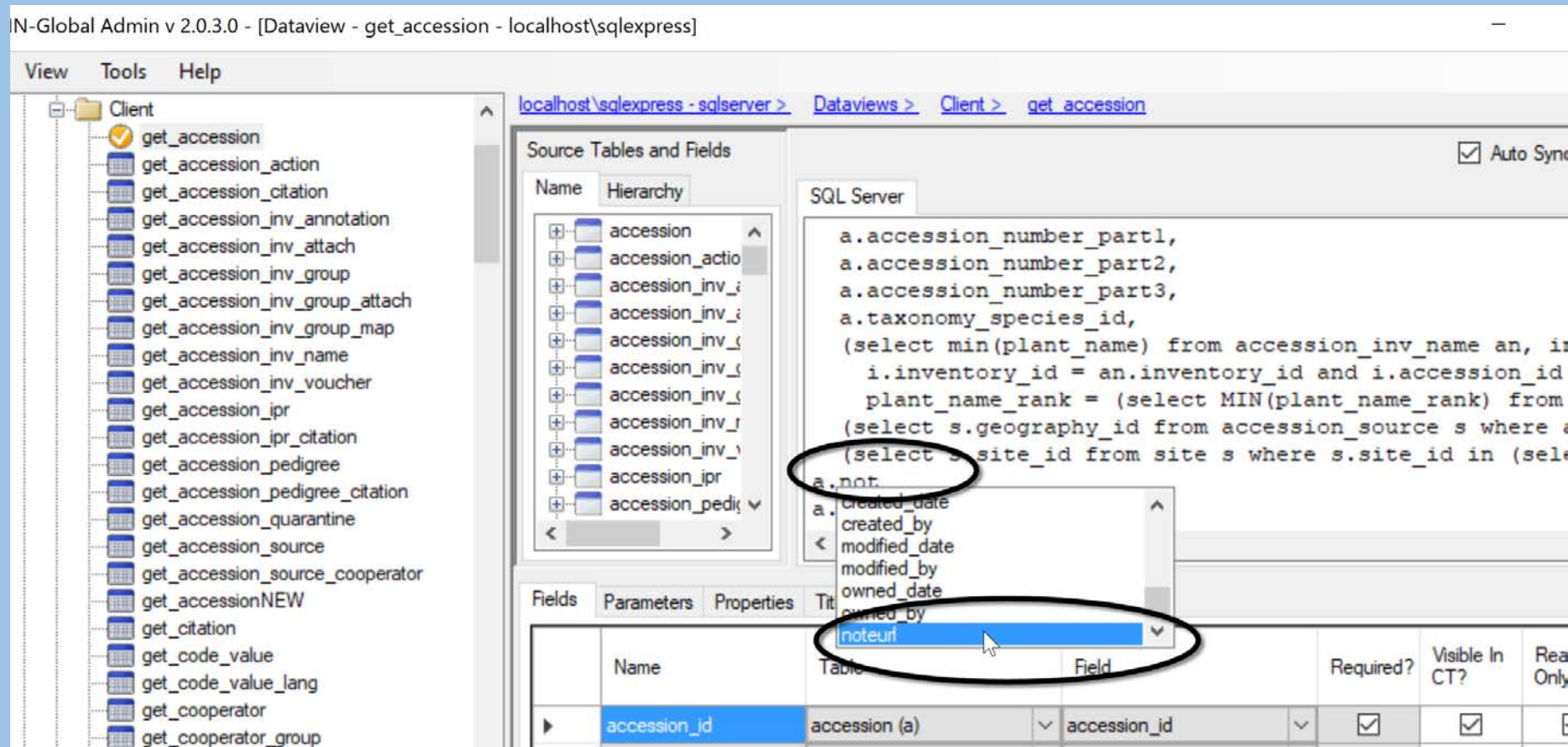
Default Value: ☒ Empty Default Value

User Interface:

Display Text:

	Language	Title	Description
	Český		
	ENG		
...	English	URL	Accepts html code for URL
	Español		
	Français		
	Português		

6. In the DV Editor, add the select to the SQL



Steps in Mapping a DB *Field* to a Dataview

7. Test: Preview

Table Mappings: (Field) Delete Option

- is not deleting the actual table field
- is removing the field's mapping

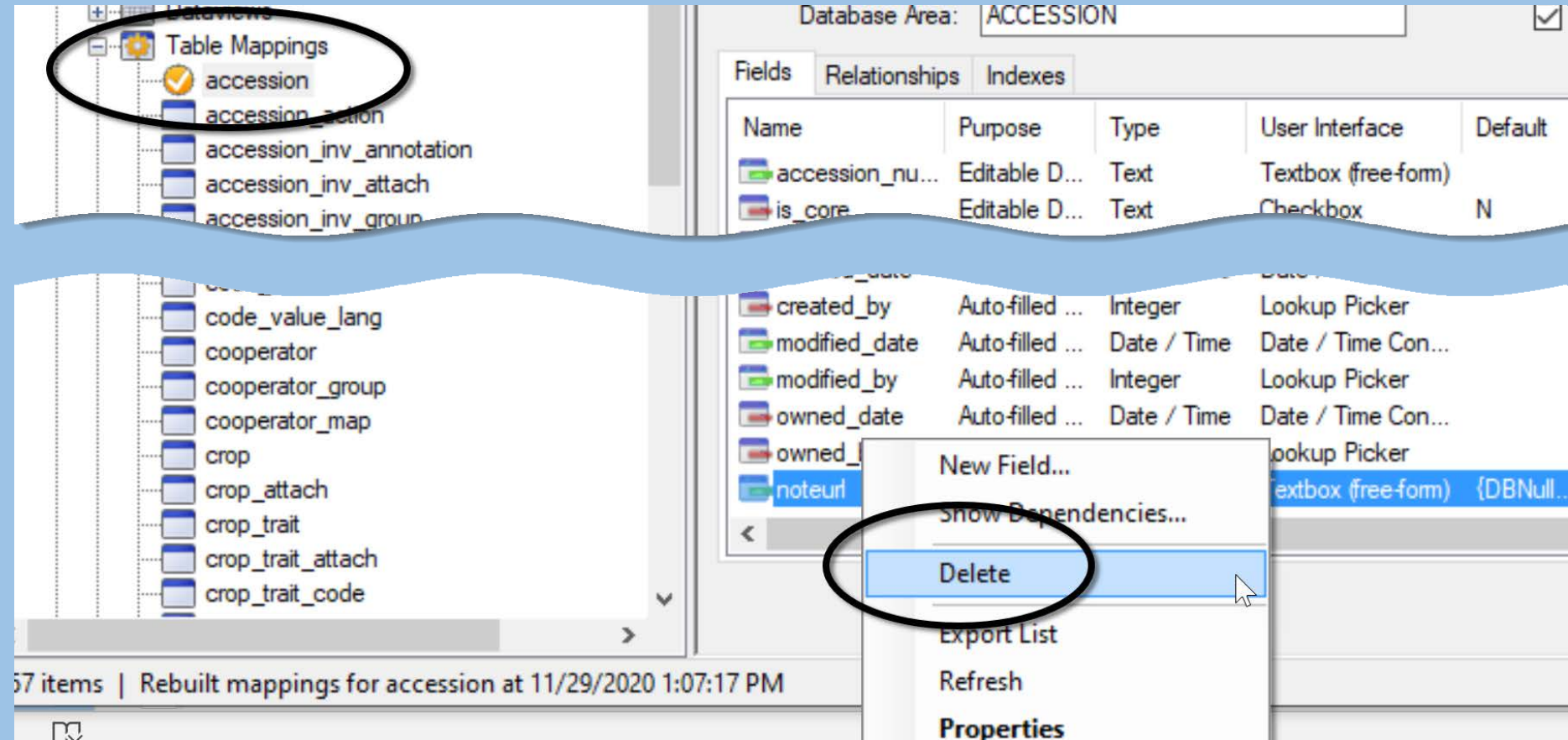
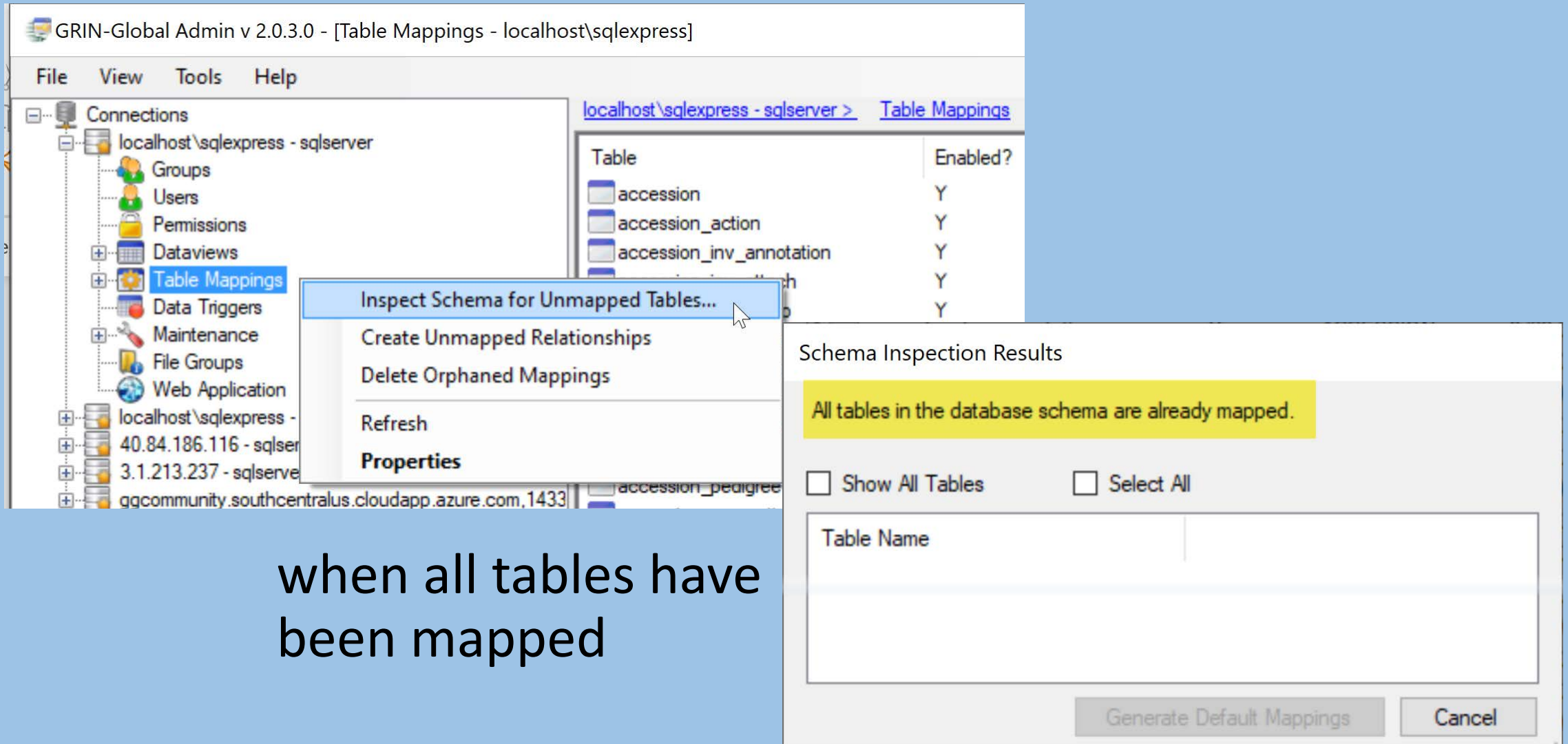


Table Mappings: Inspect Schema



GRIN-Global Admin v 2.0.3.0 - [Table Mappings - localhost\sql[express]

File View Tools Help

Connections

- localhost\sql[express] - sqlserver
 - Groups
 - Users
 - Permissions
 - Dataviews
 - Table Mappings**
 - Data Triggers
 - Maintenance
 - File Groups
 - Web Application
- localhost\sql[express] - 40.84.186.116 - sqlser
- localhost\sql[express] - 3.1.213.237 - sqlserve
- localhost\sql[express] - qqcommunity.southcentralus.cloudapp.azure.com,1433

localhost\sql[express] - sqlserver > Table Mappings

Table	Enabled?
<input type="checkbox"/> accession	Y
<input type="checkbox"/> accession_action	Y
<input type="checkbox"/> accession_inv_annotation	Y
<input type="checkbox"/> accession_pedigree	Y
<input type="checkbox"/> accession_pedigree	Y

Inspect Schema for Unmapped Tables...

Create Unmapped Relationships

Delete Orphaned Mappings

Refresh

Properties

Schema Inspection Results

All tables in the database schema are already mapped.

☐ Show All Tables ☐ Select All

Table Name

Generate Default Mappings Cancel

when all tables have
been mapped

Table Mappings: Inspect Schema...

Schema Inspection Results

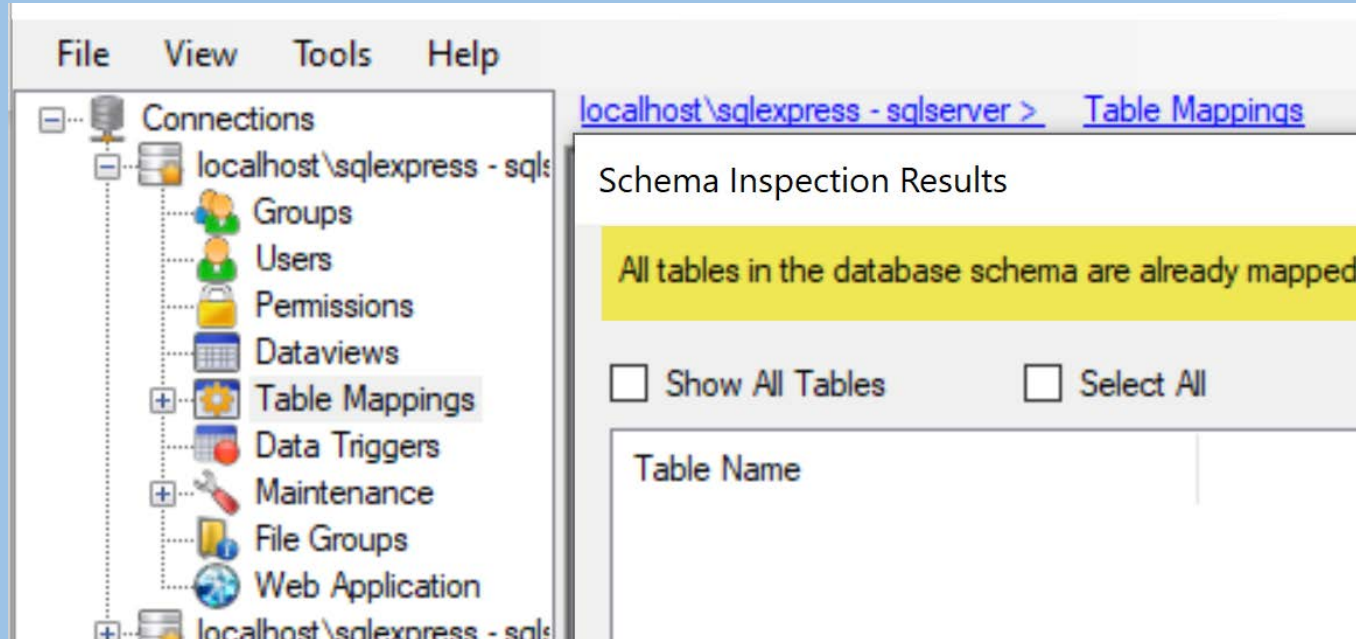
Listing all tables in the database schema.

☒ Show All Tables ☐ Select All

Table Name	
<input checked="" type="checkbox"/>	Note
<input checked="" type="checkbox"/>	notepad
<input type="checkbox"/>	accession
<input checked="" type="checkbox"/>	accession_action
<input type="checkbox"/>	accession_inv_annotation
<input type="checkbox"/>	accession_inv_attach
<input type="checkbox"/>	accession_inv_group
<input type="checkbox"/>	accession_inv_group_attach
<input type="checkbox"/>	accession_inv_group_map
<input type="checkbox"/>	accession_inv_name
<input type="checkbox"/>	

changes
detected

Table Mappings: Create Unmapped ...



(when all
tables have
been mapped)

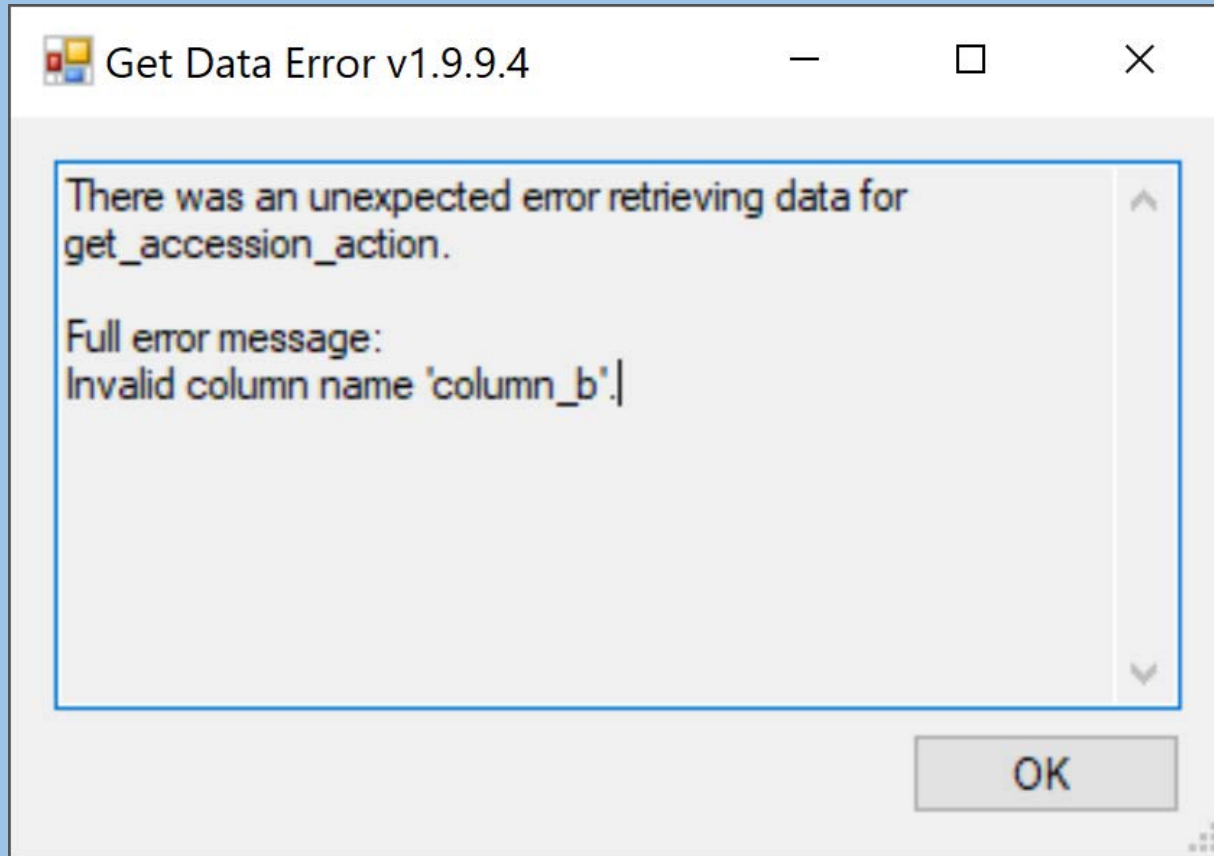
(First – in SSMS – Create Table)

Table Mappings: Delete Orphaned Mappings

Delete “Orphaned Mappings”

- when tables have been dropped from the schema, but are still mapped in Table Mappings

CT Error Message when Table Mapping isn't quite right



CT Error Message when Table Mapping isn't quite right

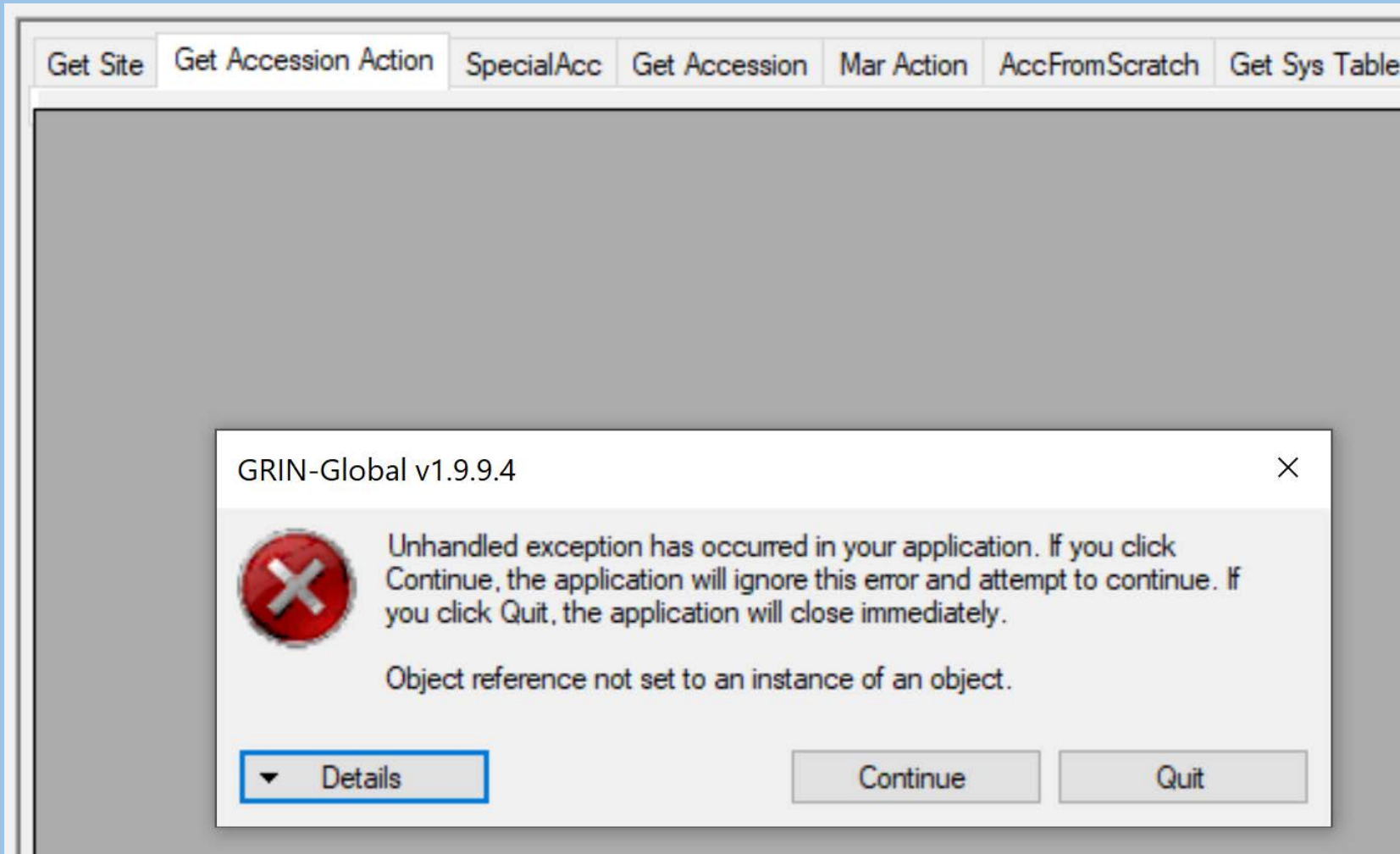
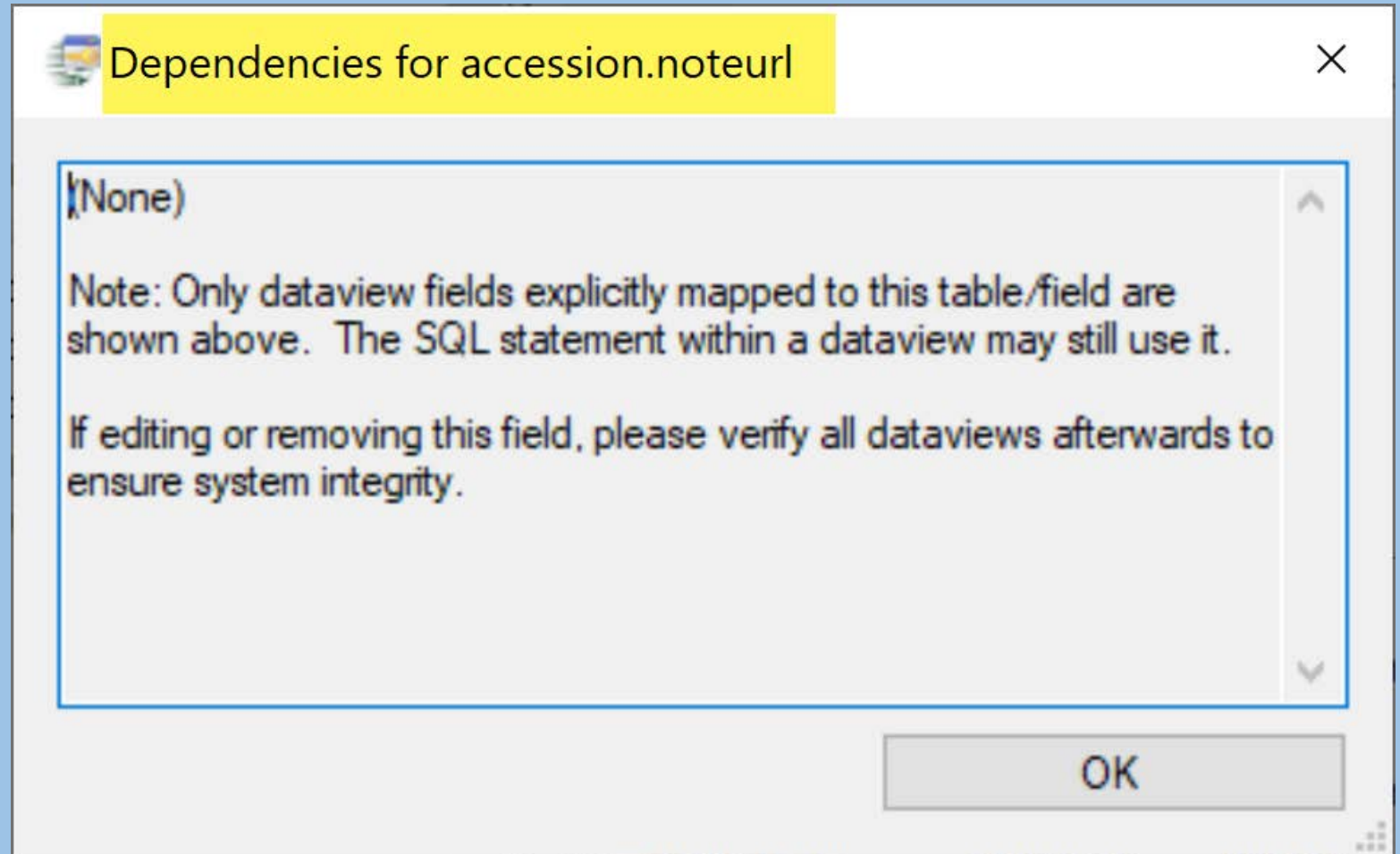
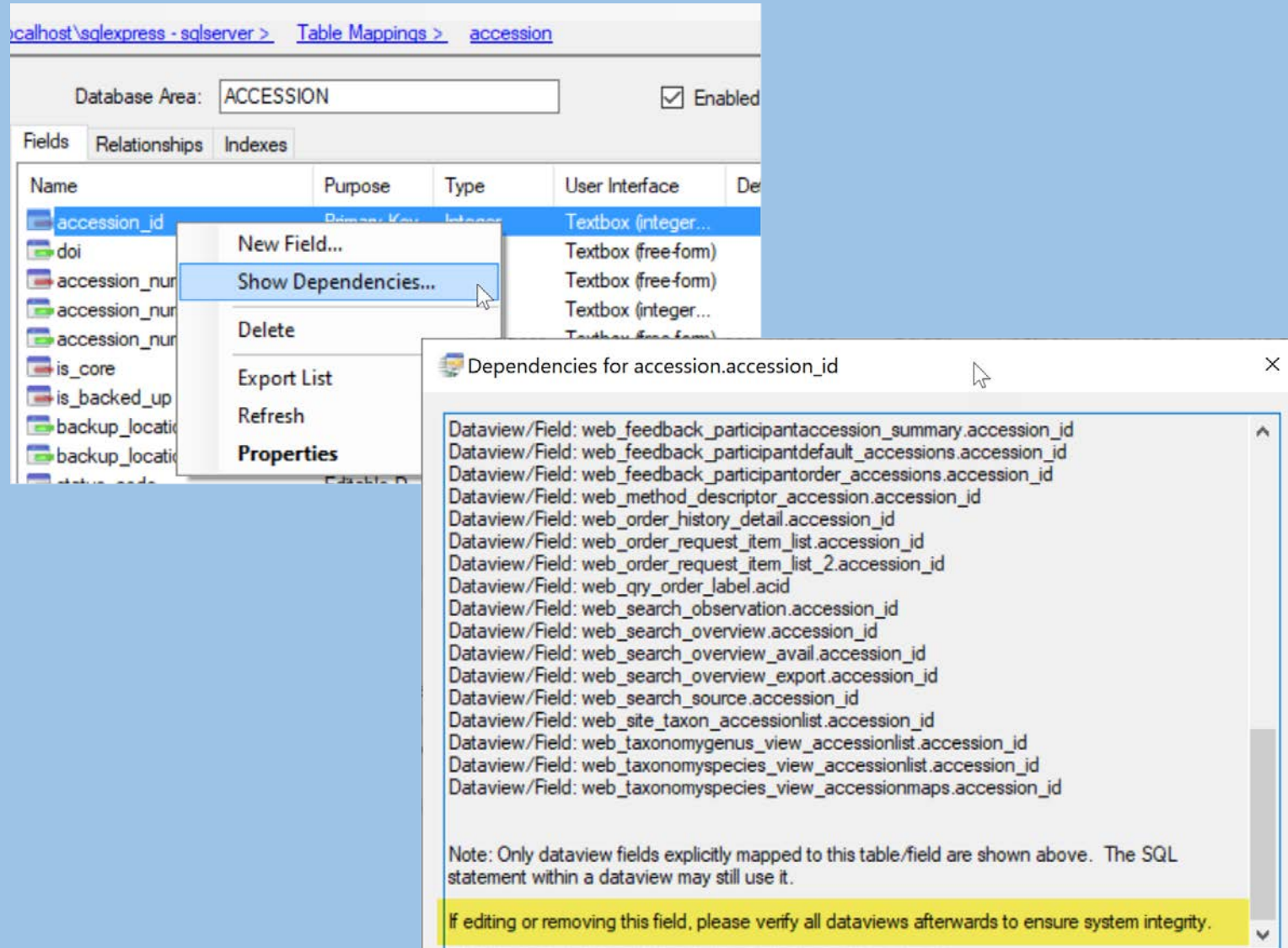


Table Mapping: Show Dependencies Option



Show Dependencies



localhost\sqlexpress - sqlserver > Table Mappings > accession

Database Area: ☒ Enabled

Fields Relationships Indexes

Name	Purpose	Type	User Interface	De
accession_id	Primary Key	Integer	Textbox (integer...	
doi			Textbox (free-form)	
accession_nu			Textbox (free-form)	
accession_nu			Textbox (integer...	
accession_nu			Textbox (free-form)	
is_core				
is_backed_up				
backup_locati				
backup_locati				
status_code				

Context Menu:

- New Field...
- Show Dependencies...
- Delete
- Export List
- Refresh
- Properties

Dependencies for accession.accession_id

- Dataview/Field: web_feedback_participantaccession_summary.accession_id
- Dataview/Field: web_feedback_participantdefault_accessions.accession_id
- Dataview/Field: web_feedback_participantorder_accessions.accession_id
- Dataview/Field: web_method_descriptor_accession.accession_id
- Dataview/Field: web_order_history_detail.accession_id
- Dataview/Field: web_order_request_item_list.accession_id
- Dataview/Field: web_order_request_item_list_2.accession_id
- Dataview/Field: web_qry_order_label.acid
- Dataview/Field: web_search_observation.accession_id
- Dataview/Field: web_search_overview.accession_id
- Dataview/Field: web_search_overview_avail.accession_id
- Dataview/Field: web_search_overview_export.accession_id
- Dataview/Field: web_search_source.accession_id
- Dataview/Field: web_site_taxon_accessionlist.accession_id
- Dataview/Field: web_taxonomygenus_view_accessionlist.accession_id
- Dataview/Field: web_taxonomyspecies_view_accessionlist.accession_id
- Dataview/Field: web_taxonomyspecies_view_accessionmaps.accession_id

Note: Only dataview fields explicitly mapped to this table/field are shown above. The SQL statement within a dataview may still use it.

If editing or removing this field, please verify all dataviews afterwards to ensure system integrity.

Table Mappings - Relationships

- Relationships for a table. ... used by the dataview editor to determine how to automatically generate SQL when a table or field is dragged onto the SQL pane
- Also used by the middle tier to determine ownership of a database record when a new record is created.

Relationships

GRIN-Global Admin v 1.10.6.0 - [Table Mapping - inventory - localhost\sqlexpress]

File View Tools Help

localhost\sqlexpress - sqlserver > Table Mappings > inventory

Database Area: INVENTORY ☒ Enabled

Fields Relationships Indexes

Child	Type	Parent
inventory.accession_id	Parent	accession.accession_id
inventory.created_by	Parent	cooperator.cooperator_id
inventory.modified_by	Parent	cooperator.cooperator_id
inventory.owned_by	Parent	cooperator.cooperator_id
inventory.backup_inventory_id	Self-referential parent	inventory.inventory_id
inventory.parent_inventory_id	Self-referential parent	inventory.inventory_id
inventory.inventory_maint_policy_id	Parent and owner	inventory_maint_policy.inventory_maint_policy_id
inventory.preservation_method_id	Parent	method.method_id
inventory.regeneration_method_id	Parent	method.method_id

When the relationship type is “OWNER_PARENT,” the record in the child table is owned by the owner of the parent record

Indexes

displays table keys

Microsoft SQL Server Management Studio

File Edit View Project Debug Tools Window Help

New Query

Object Explorer

Connect

dbo.accession

Columns

Keys

Constraints

DF_accession_is_we_108B795B

Triggers

Indexes

ndx_a_part1 (Non-Unique, Non-Clustered)

ndx_a_part2 (Non-Unique, Non-Clustered)

ndx_a_part3 (Non-Unique, Non-Clustered)

ndx_fk_a_created (Non-Unique, Non-Clustered)

ndx_fk_a_modified (Non-Unique, Non-Clustered)

ndx_fk_a_owned (Non-Unique, Non-Clustered)

ndx_fk_a_t (Non-Unique, Non-Clustered)

ndx_uniq_ac (Unique, Non-Clustered)

ndx_uniq_doi (Unique, Non-Clustered, Filtered)

PK_accession (Clustered)

Statistics

dbo.accession_action

dbo.accession_inv_annotation

dbo.accession_inv_attach

dbo.accession_inv_group

dbo.accession_inv_group_attach

dbo.accession_inv_group_map

dbo.accession_inv_name

dbo.accession_inv_voucher

dbo.accession_ipr

dbo.accession_pedigree

dbo.accession_quarantine

Select a name

General

Options

Storage

Filter

Fragmentation

Extended Properties

Script Help

Table name: accession

Index name: ndx_uniq_ac

Index type: Nonclustered

☒ Unique

Index key columns

Included columns

Name	Sort Order	Data Type	Size	Identity	Allow NULLs
accession_number_part1	Ascending	nvarchar(50)	100	No	No
accession_number_part2	Ascending	int	4	No	Yes
accession_number_part3	Ascending	nvarchar(50)	100	No	Yes

Add... Remove Move Up Move Down

GRIN-Global Admin v 2.0.3.0 - [Table Mapping - accession - localhost\sqlexpress]

File View Tools Help

Table Mappings

accession

accession_action

accession_inv_annotation

accession_inv_attach

accession_inv_group

accession_inv_group_attach

accession_inv_group_map

accession_inv_name

accession_inv_voucher

accession_ipr

accession_pedigree

accession_quarantine

accession_source

accession_source_map

app_resource

localhost\sqlexpress - sqlserver > Table Mappings > accession

Database Area: ACCESSION

☒ Enabled

Fields Relationships Indexes

Name	Is Unique?	Fields
ndx_a_part1	N	(1) accession_number_part1
ndx_a_part2	N	(1) accession_number_part2
ndx_a_part3	N	(1) accession_number_part3
ndx_fk_a_created	N	(1) created_by
ndx_fk_a_modified	N	(1) modified_by
ndx_fk_a_owned	N	(1) owned_by
ndx_fk_a_t	N	(1) taxonomy_species_id
ndx_uniq_ac	Y	(3) accession_number_part1, accession_number_part2, accession_number_part3
ndx_uniq_doi	Y	(1) doi

Languages ...Tables ...and Dataviews

Languages ...Tables ...and Dataviews

Table	Stores data for the...
sys_table_field_lang sys_dataview_field_lang	Column headings displayed in the dataviews
app_resource	Interface elements: buttons, etc.
sys_dataview_lang	Dataviews' Titles & Descriptions
code_value code_value_lang	Codes that display in the dropdowns
sys_language	Languages installed in GG

Establishing What Languages Will Exist

Use the System Language Dataview: `sys_language`

Friendly Heading Names

...can be defined at 2 Levels:

- *table* field level
the table field friendly heading name serves as the *default* heading name whenever a new dataview is created
- *dataview* field level
using the AT dataview editor, a GG admin can rename any field heading for a *specific* dataview

Friendly Heading Names

...can be defined at 2 Levels:

- *table* field level
the table field friendly heading name serves as the *default* heading name whenever a new dataview is created
- *dataview* field level
using the AT dataview editor, a GG admin can rename any field heading for a *specific* dataview ... ***this does not change the field heading for other dataviews***

Friendly Names – 2 Types

- *table/field level* & *dataview/field level*
- With new dataviews, the *table/field* friendly name is the default friendly name
accession_number_part1 = Accession Prefix

DB Table Field default *friendly names*

Accessions

NEW Acc Dataview

Inventory


Orders

Cooperators

Get Site

Get Sys Dataview Field Lang

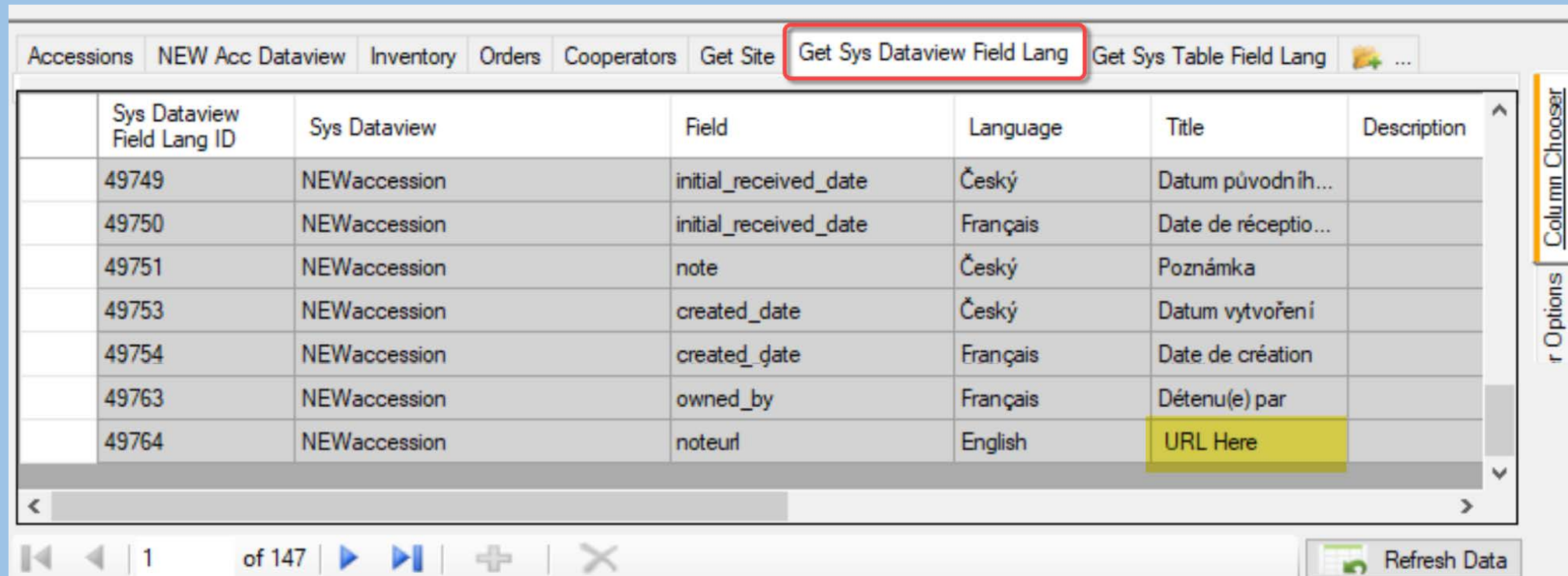
Get Sys Table Field Lang

 ...

	Sys Table Field Lang ID	Child Table	Table Field	Language	Title	Description	Created Date
	242	accession	owned_date	English	Owned Date	owned_date -- Date when the	8/25/2010 6:35 ...
	246	accession	owned_by	English	Owned By	owned_by -- Cooperator ID of	8/25/2010 6:35 ...
	248	accession	location1_s	English	Location 1	backu...	8/25/2010 6:35 ...
	288	accession	taxonomy_species_id	English	Taxon	taxonomy_species_id --	8/25/2010 6:35 ...
	293	accession	note	English	Note	note -- General	8/25/2010 6:35 ...
	3574	accession	status_code	English	Status	status_code --	10/14/2011 2:13..
	13877	accession	is_web_visible	English	Is Web Visible?	is_web_visible --	3/7/2014 1:12 PM
	14085	accession	doi	English	Digital Object Ide...	doi -- Digital object	11/28/2018 6:03..
	15595	accession	noteurl	English	URL	URL goes here	11/30/2020 8:34..

screen from CT: URL in this example is
the default friendly name

Dataview-specific *friendly names*



	Sys Dataview Field Lang ID	Sys Dataview	Field	Language	Title	Description
	49749	NEWWaccession	initial_received_date	Český	Datum původníh...	
	49750	NEWWaccession	initial_received_date	Français	Date de réceptio...	
	49751	NEWWaccession	note	Český	Poznámka	
	49753	NEWWaccession	created_date	Český	Datum vytvoření	
	49754	NEWWaccession	created_date	Français	Date de création	
	49763	NEWWaccession	owned_by	Français	Détenu(e) par	
	49764	NEWWaccession	noteurl	English	URL Here	

screen from CT: the Title highlighted here is the friendly name used by the **NEWWaccession** dataview (only)

Confusing? !?!

... the AT dataview editor Fields tab doesn't indicate whether you are seeing the underlying (default) sys_**table**_field_lang heading name or the overriding sys_**dataview**_field_lang heading name.

Reference: ***Languages & GRIN-Global***

https://www.grin-global.org/docs/gg_language_guide.docx

Questions?

Marty Reisinger

- mar@rrginc.com
- 410 790 8649
- Skype: live:mar_3510

Friendly Names – 2 Types

- *table/field level* & *dataview/field level*
- With new dataviews, the table/field friendly name is the default friendly name
accession_number_part1 = Accession Prefix
- Select “**Include language-specific field names**” checkbox to pull in the “friendly” names
- Selecting “**Use as defaults in table mappings**” checkbox will write the *table-level* “friendly” name for each field